



Advanced Configuration

XE135B, featuring high efficiency and energy conservation, is mainly used for earth working conditions. The powerful Isuzu BB-4BG1TRP engine and high-end Kawasaki hydraulic system are matched perfectly, which can guarantee the product reliability and define high-efficiency operation and fuel economy. With strengthened structural parts, it is applicable for earth working, road construction and municipal engineering, and allow you to get digging and loading operations done easily.

Environmentally friendly and energy saving

- ▶ Customized high-power engine is more powerful
- ▶ Adopting XCMG's proprietary matching technology to achieve higher operation efficiency and lower fuel consumption
- ▶ Minimized impact on emission systems and make it more environmentally friendly

Multiple applications

- ▶ Different boom, arm and bucket combinations can provide excellent all-around versatility
- ▶ Multi-functional work tool system can meet various operational requirements including digging, breaking and so on.

Comfortable operating experience

- ▶ Air conditioner and heater ensure the appropriate temperature
- ▶ Rear camera and right camera provide better view
- ▶ Air-suspension seat equipped with electric heating function
- ▶ Integrated control panel and large display screen provide multiple information

Excellent after-sales service

- ▶ Global after-sales service system and quick response mechanism
- ▶ Real-time technical consultation and maintenance

Convenient maintenance

- ▶ Easy maintenance design, open the engine hood for no dead angle maintenance.
- ▶ Maintenance-free battery for battery status at a glance

Safe and durable

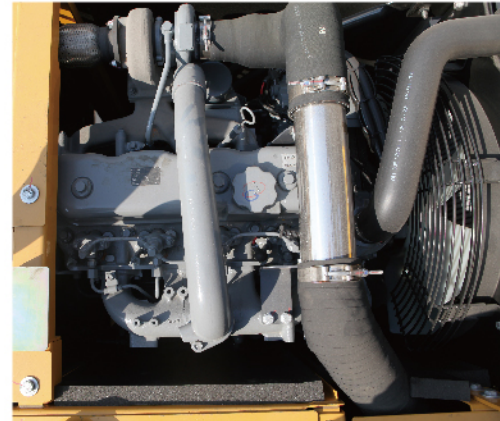
- ▶ Upgrade undercarriage to improve load bearing performance
- ▶ Strengthen the key stress-bearing parts of chain links
- ▶ Strengthen the H-beam section to greatly increase the strength of the end face



Ecological And Economical

Environmentally friendly and energy-saving power system

- ▶ It is equipped with the original imported Isuzu BB-4BG1TRP engine, which has the advantages of high reliability, strong power, low fuel consumption and convenient maintenance, and meets Tier II emission standards.



Efficient hydraulic system

- ▶ Using the world famous brand main valve, with valve integration, regeneration, priority and other functions.
- ▶ Double-pump constant-power negative-flow hydraulic system, fully absorbing engine power, large system flow, low pressure loss, excellent compound operation and good economy.
- ▶ Instantaneous boost function, through the handle boost button, instantaneously improve the digging force, overcome the arduous resistance, in order to cope with complex working conditions.

Electrical control system

- ▶ The new microcomputer control system makes full use of the engine power to keep the machine in optimum efficiency and economy under different working conditions.



Cooling system

- ▶ Adopting imported radiator, it has the characteristics of smooth airflow, fast flow rate, good heat dissipation effect, stable system working temperature and long service life.

Comfortable And Reliable

Comfortable

- ▶ Spacious, comfortable and safe cab, AM/FM radio, cigarette lighter and other facilities.
- ▶ The silicone rubber rubber spring composite damper is used to greatly reduce the vibration and impact in a certain frequency band.
- ▶ High-grade suspension woven seat is adjustable in all directions, has good ventilation, and can thus reduce the operator's fatigue.
- ▶ High-power air-cooling dual-purpose automatic air conditioner with dual-stage air filtration. The all-round stereo air outlet can realize a variety of hair blowing modes, which makes the operation more comfortable.

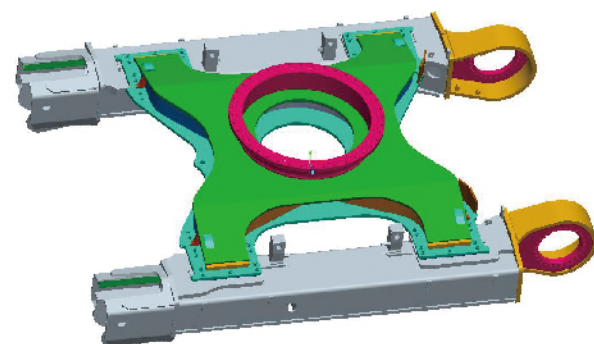
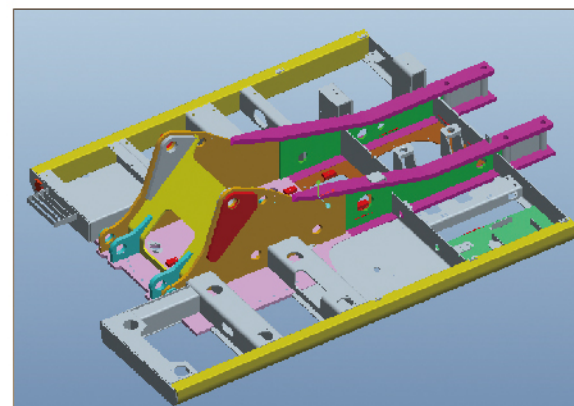


Reliable

- ▶ Forgings are used at key hinge points to greatly improve load bearing capacity and durability
- ▶ The root of the boom adopts double dovetail design to reduce stress concentration, increase the thickness of the front casting and improve the torsional bearing capacity.
- ▶ The arm adopts a box structure, and the thickness of the plate in local area is increased to improve the torsional resistance and impact resistance.



- ▶ The main beam of the turntable adopts the H-type structure, and the side beam adopts "D-section" structural steel, which has higher overall reliability.



- ▶ Adopting high-strength steel plate and robot-welded X-shaped frame, the lower frame has strong torsional bending resistance and good passability



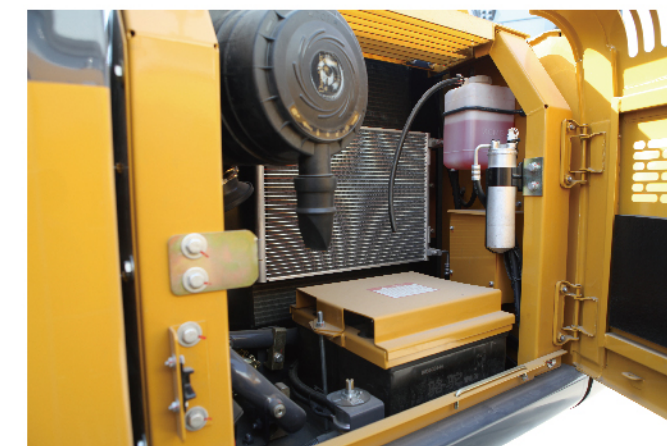
- ▶ XCMG's self-made sprocket, idler, carrier roller, track roller and crawler, partially strengthening the track chain links, which can improve wear resistance and double the service life



- ▶ The cab seat is equipped with a seat belt; the safety lock handle is used to prevent misoperation; the fire extinguisher bracket and the safety escape hammer are arranged.

Maintenance And Service

- ▶ Open hood, all maintenance points are accessible on the ground level



- ▶ The boom lubrication position is concentrated to the root of the boom through the pipeline, which is more convenient for maintenance.

- ▶ Using a maintenance-free battery, you can understand the battery status at a glance



- ▶ A wide range of after - sales service system, quick - response rescue mechanism to ensure that you use at ease



Multiple Applications Conditions

The independently developed multi-functional intelligent work tool control system can realize crushing, scraping, loosening, lifting, and other operations, and can truly integrate multiple operations into one machine.

With first-rate digging force, the machine can be fully competent under complicated working conditions.



Standard Equipment		
	Name of equipment	XE135B
Engine	Automatic preheating	
	Oil-water separator with water level indication sensor	
	Radial seal air cleaner	
	50°C high temperature ambient cooling assembly	
	Radiator dust screen	
	Fuel marker	
	Air pressure difference indicator	
	Automatic idle speed	
	Boom/arm flow regeneration	
	Auxiliary hydraulic valve	
Hydraulic system	Reverse rotation damping valve	
	Automatic rotation parking brake	
	Hydraulic buffer valve	
	Straight hydraulic circuit	
	Boom priority valve	
	Rotary logic valve	
	Hydraulic oil ISO VG 46	
	Rotary anti-sway valve	
	Pressurized cab	
	Fully adjustable mechanical suspension seat	
Cab and interior trim	Adjustable seat armrest	
	Seat belt (51 mm [2 "] wide)	
	Openable windscreen with auxiliary device	
	Front windshield divided by 70/30 ratio	
	Double laminated windshield and other toughened windows	
	Sliding door upper window	

Cab and interior trim	Bi-directional air outlet air conditioner with defroster (automatic type) (pressurization function)	
	Color liquid crystal display capable of displaying warning information, filter / liquid replacement information and working hours	
	Control handle	
	Travel control pedal with detachable manual control lever	
	Two stereo speakers	
	Beverage cup holder	
	Coat and hat hook	
	Cleanable floor mat	
	Air conditioning system	
	High and low gears shift	
Safety and security configuration	One-key boost mode	
	Top sunroof	
	Intermittent multi-gear wiper	
	Cup holder/envelope	
	Cold and warm storage box	
	Radio receiver	
	Driving door locks and cabin locks	
	Alarm horn	
	Isolation plate between engine and oil pump chamber	
	Rear window emergency exit	
Chassis system and shield	Battery circuit breaker	
	Overheat alarm	
	Safety handrails and pedals	
	Anti-skid plate/anti-skid paste	
	Hydraulic safety locking lever	
	Emergency escape hammer	
	Left and right rearview mirrors	
	Bottom frame traction ring	

Chassis system and shield	500 mm (24 ") three-rib track shoe
	Protective device kit: chassis bottom sealing plate, walking motor sealing plate
	Track single rail protector
Electrical system	Battery (2× 750CCA)
	50A alternator
	4.5 kW starter motor
	24V cigarette lighter
Lighting lamp	5V USB interface
	Right and left boom work lights
	Right working light installed on storage box
Technology	Cab interior lighting
	XEICS intelligent control system
	Data link socket

Optional Equipment

Engine	Name of equipment	XE135B
	Oil-water separator with heater (24V)	
	Coolant heater (fuel type)	
	Low temperature start	
	Fuel filling pump 50L / min	
Hydraulic system	Rapid fuel filling system	
	Spare valve plate	
	Hydraulic pipeline: breaking hammer and thumb clamp	
Cab and interior trim	Hydraulic oil ISO VG 32, 68	
	Air suspension seat with cushion heating	

Cab and interior trim	Retractable seat belt (51 mm [2 "] wide)
	Vehicle mounted oxygen supply device
	Fire extinguisher
	Explosion-proof valve for arm pipeline
	Roll over protective structure (ROPS)
Chassis system and shield	Rotary alarm lamp
	Counterweight rearview mirror
	Travel alarm
Quick coupler	Reserve switch for working aids
	Falling object protective structure (FOPS)
	Boom and arm retaining valve
	Explosion-proof valve for boom pipeline
	700 mm (28 ") three-rib track shoe
Lighting lamp	800 mm (31 ") three-rib track shoe
	Track rubber block
	Hydraulic breaker
	Hydraulic thumb pliers
	Ripper
	Vibratory plate compactor
	Hydraulic shear
	Grapples
	High frequency crusher
	Clamshell bucket
	Scrap grapple
	Screening bucket
	Pipe grab
	12V power interface
	Front working light installed on cab top

Lighting lamp	Rear working light installed on cab top
Lubrication system	Electric self-lubricating system Arm concentration

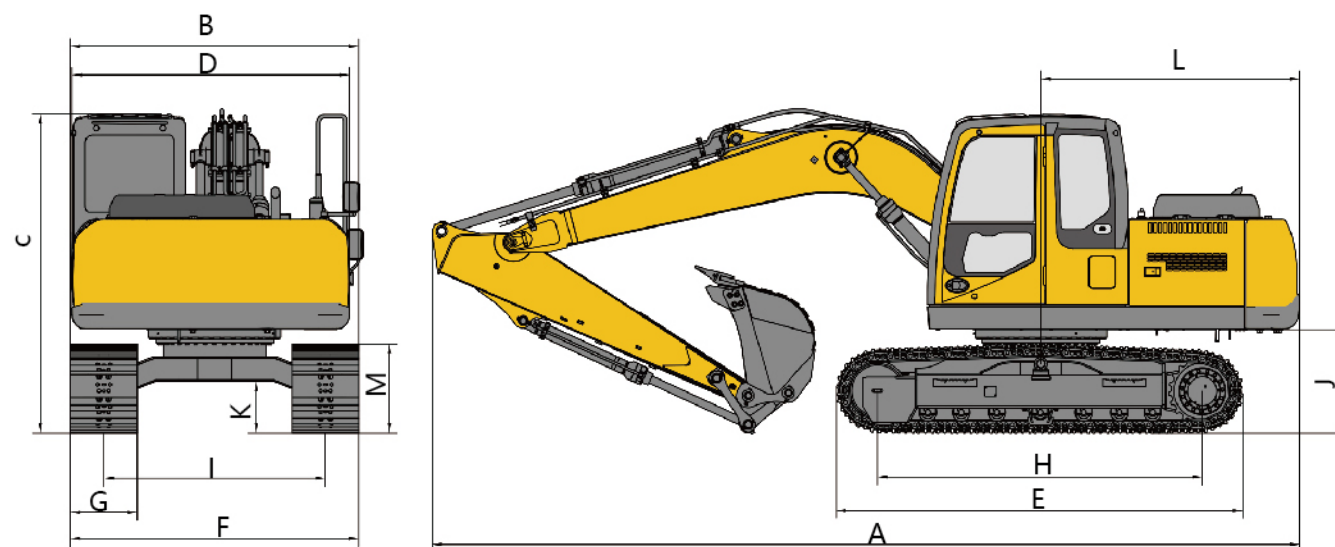
Main Specifications

Item	unit	Main specifications
Model	/	XE135B
Operation weight	Kg	13000
Bucket capacity	m ³	0.4~0.52
Engine	Model	ISUZU BB-4BG1TRP
	Direct injection	√
	Four strokes	√
	Water cooling	√
	Turbo-charging	√
	Air to air intercooler	×
	No. of cylinders	4
	Rated Output power	kw/rpm 72.7/2200
	Maximum torque/speed	N.m 337.6/(1600r/min)
	Displacement	L 4.329
Main performance	ravel speed (H/L)	km/h 5.16/3.03
	Swing speed	r/min 12.3
	Gradeability	° ≤35
	Ground pressure	kPa 42
	Bucket digging force	kN 85
	Arm digging force	kN 65
	Maximum tractive force	kN 134
	Main pump	/ 2
	Rated flow of main pump	L/min 2×123
	Hydraulic system	

Item	unit	Main specifications
Hydraulic system	Main safety valve pressure	MPa 31.4/34.3
	Travel system pressure	MPa 34.4
	Swing system pressure	MPa 25
	Pilot system pressure	MPa 3.9
Oil Capacity	Fuel tank	L 250
	Hydraulic tank capacity	L 130
	Engine oil capacity	L 14
Standard	Length of boom	mm 4600
	Length of arm	mm 2510
	Bucket capacity	m ³ 0.52 strengthen bucket
Optional	Length of boom	mm /
	Length of arm	mm /
	Bucket capacity	m ³ 0.4

Dimensions

Item	Unit	Parameters
A Overall length	mm	7770
B Overall width	mm	2512
C Overall height	mm	2880
D Width of platform	mm	2512
E Track length	mm	3660
F Overall width of chassis	mm	2490
G Track shoe width	mm	500
H Length to center of rollers	mm	2910
I Track gauge	mm	1990
J Counterweight clearance	mm	964
K Min. ground clearance	mm	478
L Min. tail swing radius	mm	2294
M Track height	mm	838



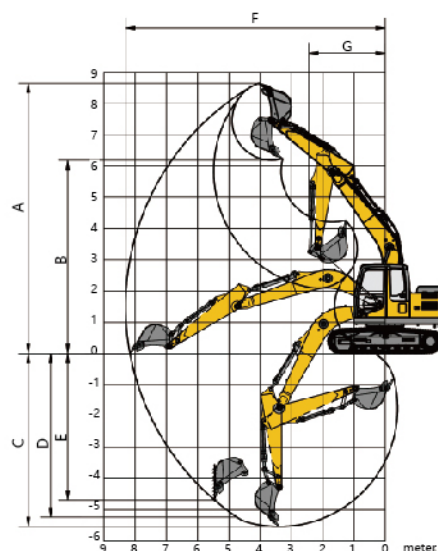
Lifting Capacity

Lifting point height (m)	Rated lift capacity – Straight ahead (back) (kg)					Rated lift capacity – over-side (kg)				
	Lifting point radius (m)				Lifting capacity at maximum radius	Lifting point radius (m)				Lifting capacity at maximum radius
	1.5	3	4.5	6		1.5	3	4.5	6	
6			*3242	*3371	*2593			*3242		*2593
4.5			*3438	*3371	*2404			*3438	2291	2072
3		*5662	*4186	3479	2201		*5662	3464	2228	1784
1.5		*8177	*5097	3375	2100		5823	3230	2133	1677
Ground		*7128	5054	3291	2128	*4953	5517	3066	2055	1698
-1.5	*4953	*8647	4980	3261	2318	*9054	5485	3001	2028	1883
-3	*9054	*7392	*5015		2818		5581	3039		2406

Capacities marked with an asterisk(*) are limited by hydraulic capacities.

Working Range

Item	Unit	Parameters
A Max. digging height	mm	8641
B Max. dumping height	mm	6181
C Max. digging depth	mm	5538
D Maximum depth cut for 2240mm(8 ft) level bottom	mm	5287
E vertical wall digging depth	mm	4727
F Max. digging radius	mm	8296
G Min. swing radius	mm	2335





Machmall.com is an electromechanical product platform officially launched by XCMG, aiming to provide global customers with a complete set of high-quality construction machinery solutions and supporting equipment.

Xuzhou Construction Machinery Group Co., Ltd. (XCMG Group), founded in 1943, is the fourth largest worldwide construction machinery manufacturer and the largest in China with products covering 183 countries and regions.

XCMG have 12 complete solutions: Crane lifting, Mining Construction, Earth-moving Solutions, Road Machinery, Concrete Equipment, Tunnel and Underground Space Construction, Mobile Elevating Work Platform (MEWP), Piling and Non-excavation Equipment, Transportation Equipment, Environmental Sanitation Equipment, Firefighting, Safety and Emergency Rescue

徐工徐工，助您成功

— XCMG for your success —



<https://www.machmall.com/>



machmall@xcmg.com



008618652183963
86-516 8773 9797

